



General Information

Presentation	100 lb (sack)	50 lb (sack)	Big Bag	Bulk
Availability	N/A	✓	✓	✓
Code		FM-100325S50	FM-100325S-BB	FM-100325S
Qualities available*		S1	S1	S1

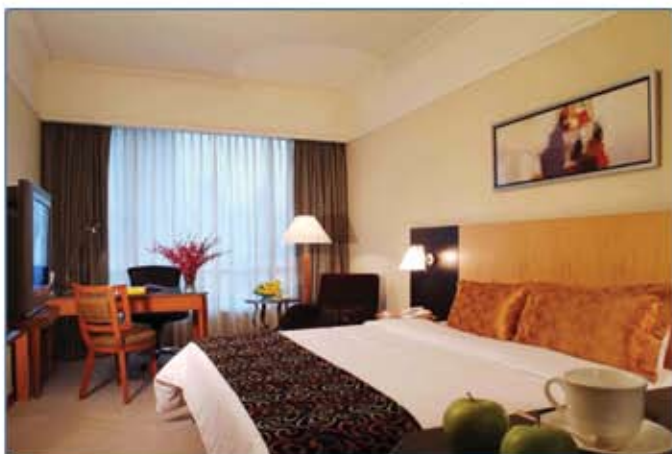
Colors: White

Technical Information

Total Alkalinity (as Na <sub>2</sub> O) ASTM D-1208.....	0.04%
Bulk Density (ASTM D-1895).....	N/A
Moisture.....	0.15%
Acid Insoluble.....	0.14%
pH (ASTM D-1208).....	10.22
Particle Shape (Microscope).....	Geometric
Dry Brightness (Hunter Reflectance).....	N/A

Typical Chemical Analysis

Calcium Carbonate.....	95.50%
Magnesium Oxide.....	1.64%
Silica.....	1.91%
Aluminium oxide.....	0.04%
Ferric oxide .....	0.68%
Potassium Oxide.....	0.01%
Sodium Oxide.....	0.02%
Sulphates.....	> .10 %
Lead .....	> 10 (mg/kg)



Sieve Information

	% Accumulated retained
Mesh + #200 .....	2.5%
Mesh + #325 .....	15%

Market Applications

- Coatings
- Grouts
- Joint Compounds

\*Qualities available: S= Supreme P1= Premium 1 P2= Premium 2  
 T1= Type 1 T2 = Type 2 NC= Non classified

Calcium Carbonate is subject to normal variations related to the deposits from which it is extracted.